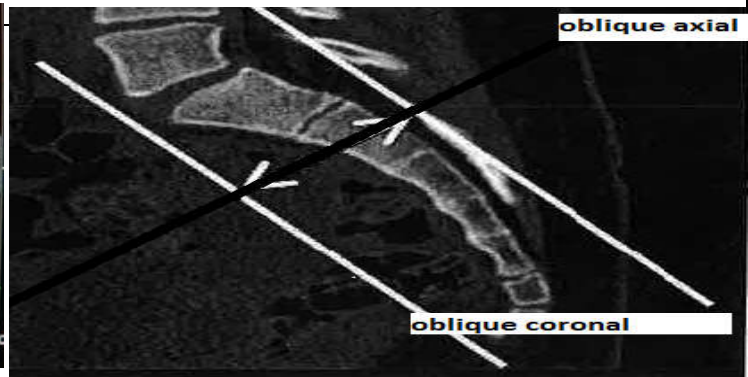
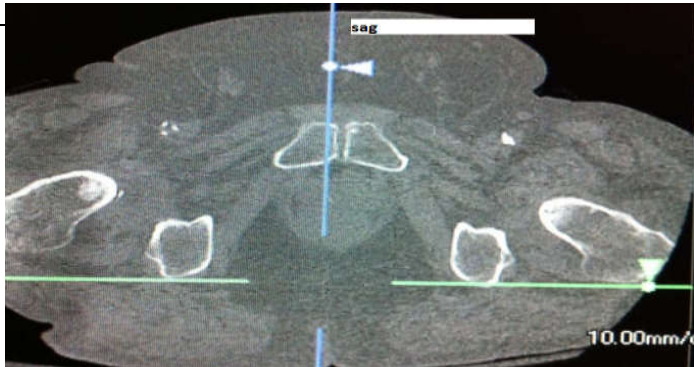


# Sacroiliac SUMMARY

Indications	Pain, swelling, trauma					
Diagnostic Task	Detects fractures, hematomas, arthritis, bone cyst					
Scan mode	Helical					
Helical Set	recon	body part	thickness spacing	kernel	window	recon destination
	1	pelvis bone	.625mmx .625mm	bone		pacs
	2	soft tissue	.625mmx.625mm	standard		mpr 3d
	3	soft tissue pelvis	2mmx 2mm	standard		pacs
	4	sag bone	2mmx2mm	bone		pacs
	5	oblique coronal bone	2mmx2mm	bone		pacs
	6	oblique axail bone	2mmx2mm	bone		pacs
	7	sag soft tissue	2mmx2mm	standard		pacs
	8	oblique coronal ST	2mmx2mm	standard		pacs
	9	oblique axial ST	2mmx2mm	standard		pacs
Scan Start/end location	1cm superior to iliac crest					
	1cm inferior to lesser trochanters					
	include all of fx and hardware					
DFOV	40 cm					
	decrease appropriately					
3D Technique Used	do 3d spin with recon 2- 20 images rotate externally-if fracture seen					
IV contrast volume/type	100ml -isovue 370- if needed for soft tissue infection or mass					
Scan delay	90seconds-Performed as directed by a the supervising radiologist					
	use axial image for sag reformats-use sag image for oblique axial and oblique coronal					



Please see online MSK CT protocols for details.

