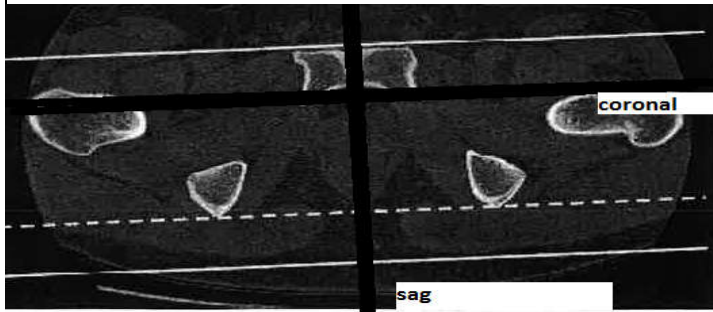


# Bone hip SUMMARY

Indications	Pain, swelling, trauma					
Diagnostic Task	Detects fractures, hematomas, arthritis, bone cyst					
Scan mode	Helical					
Helical Set		body	thickness			recon
	recon	part	spacing	kernel	window	destination
	1	hip bone	.625mmx .625mm	bone		pac
	2	soft tissue	.625mmx.625mm	standard		mpr 3d
	3	soft tissue hip	2mmx 2mm	standard		pac
	4	sag bone	2mmx2mm	bone		pac
	5	coronal bone	2mmx2mm	bone		pac
	6	sag soft tissue	2mmx2mm	standard		pac
7	coronal soft tissue	2mmx2mm	standard		pac	
Scan Start/end location	1cm superior to iliac crest					
	1cm inferior to lesser trochanters					
	include all of fx and hardware					
DFOV	40 cm					
	decrease appropriately					
3D Technique Used	do 3d spin with recon 2- 20 images rotate externally-if fracture seen					
IV contrast volume/type	100ml -isovue 370- if needed for soft tissue infection or mass					
Scan delay	90seconds-Performed as directed by a the supervising radiologist					
	using axial image for sag and coronal reformats-do sag of hip of intrest					



Please see online MSK CT protocols for details.