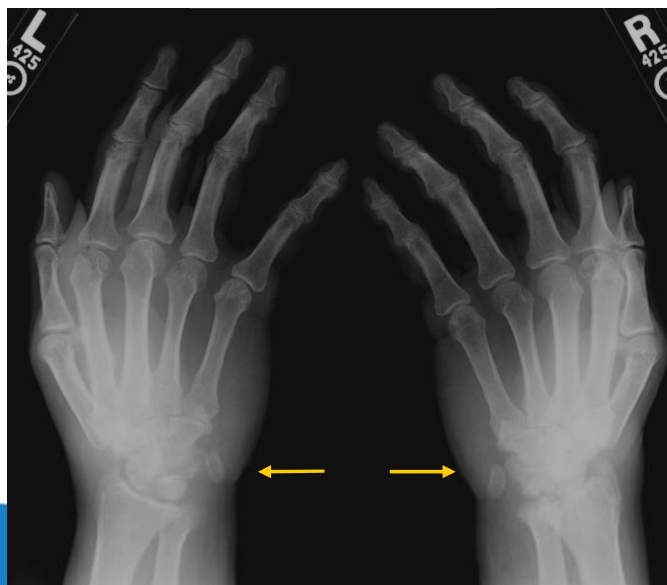


HAND & WRIST - arthritis for the hand

- *PA, BALL CATCHERS and LATERAL views of both hands from specialists only.
- *PA and Lateral views for 2 view requests from specialist only.
- *From non-specialists, do bilateral PA, Oblique and Lateral views.
- *Each set of views on one film for comparison when possible.
- *If “Wrist Only” is ordered, do 3 views wrist (see “Wrist”)

PACS Presentation - Digits facing up – toward the top of the monitor

Ball Catchers



Ball Catchers
pisiform must be seen
clearly with this view