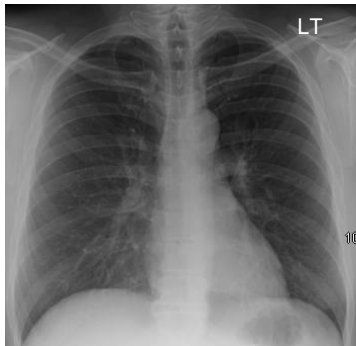
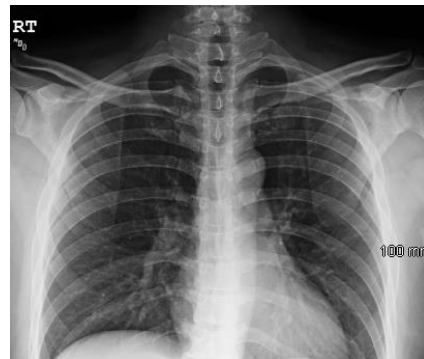


RIBS

- * PA Chest - no PA Chest if order specifically states "NO CHEST" or CPT 71100 and 71110
- * If ordered with Chest 2vws, please completed Chest as a separate exam
- * AP for ribs above the diaphragm on inspiration
- * AP for ribs below the diaphragm using abdominal technique on expiration
- OK to collimate in on affected side for unilateral ribs
- * OBLIQUE VIEWS either posterior or anterior view, affected side closest to the buckey
- * BB on area of interest
 - * By viewing all four views one should see all of the ribs



PA CHEST



AP- UPPPER RIBS



OBL- UPPPER RIBS

Expose on
INSPIRATION



AP- LOWER RIBS



OBL- LOWER RIBS

Expose on
EXPIRATION