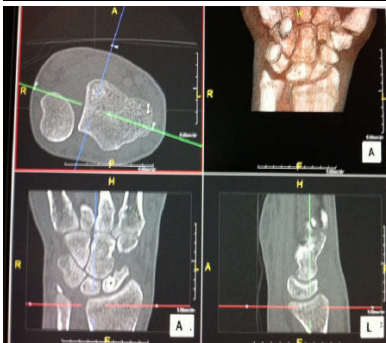


Hand wrist GO ALL

Indications	Pain, swelling, fall, mva, trauma					
Diagnostic Task	Detect fractures, dislocations, arthritis					
Scan mode	Helical					
Position/Landmark	Head first-prone -mid forearm-Craniocaudal					
Topogram	Lat 120kV 50mA		AP 110kV 15 mA			
kVp/Reference mass	110kv 507mas					
Rotation time/pitch	01.0/0.8					
Detector Configuration	32x0.7					
Table Speed/Increment	17.92					
Dose reduction	CareDose 4D					
Allowed CTDI ranges*	7mGy-50mGy					
XR29 Dose Notification value	50mGy					
Helical Set	recon	body part	thickness spacing	kernel	window	recon destination
	1	thin hand/wrist	.8mmx.8mm	Br60	osteo	pac
	2	hand/wrist ST	2mmx2mm	Br40	soft tissue	pac
	3	Cor ST	2mmx2mm	Br40	soft tissue	pac
	4	Sag ST	2mmx2mm	Br40	soft tissue	pac
	5	Cor bone	2mmx2mm	Br60	osteo	pac
	6	Sag bone	2mmx2mm	Br60	osteo	pac
	7	VRT	Radial Ranges	BR40	Soft tissue	pac
Scan Start	hand-1cm superior to the distal radioulnar joint/ wrist-1cm superior distal radial diaphysis					
	hand-through finger tips/ wrist-1cm inferior to third metacarpal base					
end location						
DFOV	10-15cm					
	decrease appropriately					
3D Technique Used	do 3d spin with recon 3-if fracture seen					
IV contrast volume/type	100ml -isovue 370- if needed for soft tissue infection or mass					
Scan delay	90seconds-Performed as directed by a the supervising radiologist					
	Patient prone					
	Arm of concern above head with elbow extended-Palm down					



1 image to reformat sag and coronal reformats

Please see online MSK CT protocols for details