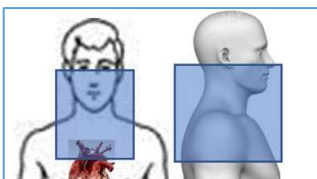


Parathyroid (4D Neck)

Scan Range: Non-Contrast

Carina to maxilla



Scan Range Arterial Phase:

Carina to maxilla

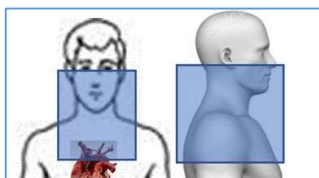
CONTRAST: (Isovue 370)

Recommended IV Gauge 18-20

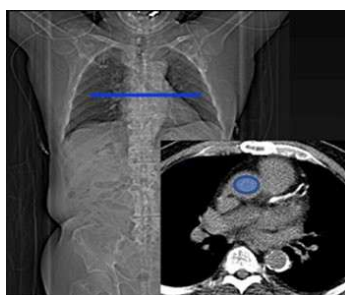
Injection Volume: 80ml for <200lbs, and 100ml for >200lbs

Injection Rate: 4mL/sec

30 Second Empiric Delay or Bolus Tracking in the Ascending Aorta

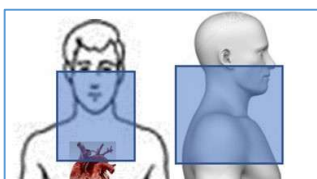


Bolus Tracking in Ascending Aorta at the level of the carina



Scan Range Venous Phase:

Carina to maxilla 90second Delay



Reconstructions:

Three Scans:

2mm Axial Neck Std

2mm Coronal Neck Std

2mm Sagittal Neck Std

180mm FOV