

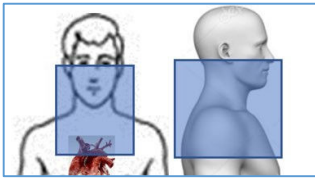
Reviewed By: Marcus Lacey, MD
Date of Last Revision: April 2026
Date of Last Review: https://docs.google.com/spreadsheets/d/1a1on-GqlksrbCU8zpnYqisOOebEUGCd_TKeLW5-Clg/edit?gid=0#gid=0

Contact: (866) 761-4200, Option 1

Parathyroid (4D Neck)

Scan Range: Non-Contrast

Carina to maxilla



Scan Range Arterial Phase:

Carina to maxilla

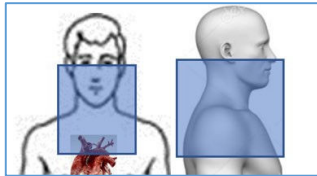
CONTRAST: (Isovue 370)

Recommended IV Gauge 18-20

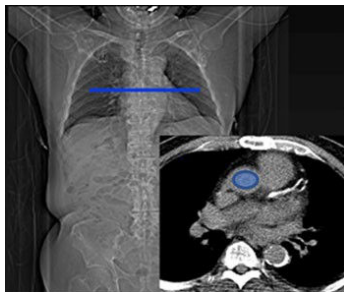
Injection Volume: 80ml for <200lbs, and 100ml for >200lbs

Injection Rate: 4mL/sec

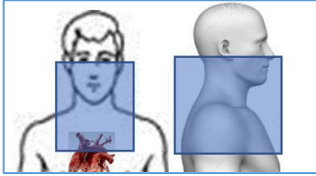
30 Second Empiric Delay or Bolus Tracking in the Ascending Aorta



Bolus Tracking in Ascending Aorta at the level of the carina



Scan Range Venous Phase:
Carina to maxilla 90second Delay



Reconstructions:

Three Scans:

2mm Axial Neck Std

2mm Coronal Neck Std

2mm Sagittal Neck Std

180mm FOV