

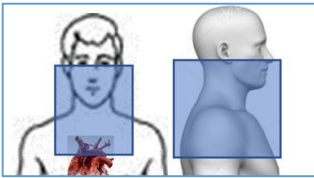
**Reviewed By:** Marcus Lacey, MD  
**Date of Last Revision:** April 2026  
**Date of Last Review:** [https://docs.google.com/spreadsheets/d/1a1on-GqlksrbCU8zpnYqisOOebEUGCd\\_TKeLW5-Clg/edit?gid=0#gid=0](https://docs.google.com/spreadsheets/d/1a1on-GqlksrbCU8zpnYqisOOebEUGCd_TKeLW5-Clg/edit?gid=0#gid=0)

**Contact:** (866) 761-4200, Option 1

## Parathyroid (4D Neck)

### Scan Range: Non-Contrast

Carina to maxilla



### Scan Range Arterial Phase:

Carina to maxilla

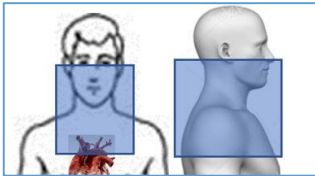
### CONTRAST: (Isovue 370 or Omnipaque)

Recommended IV Gauge 18-20

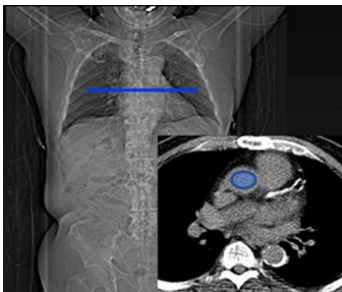
Injection Volume: 80ml for <200lbs, and 100ml for >200lbs

Injection Rate: 4mL/sec

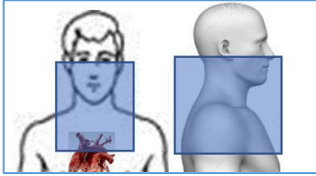
30 Second Empiric Delay or Bolus Tracking in the Ascending Aorta



***Bolus Tracking in Ascending Aorta at the level of the carina***



**Scan Range Venous Phase:**  
Carina to maxilla 90second Delay



**Reconstructions:**

Three Scans:

2mm Axial Neck Std

2mm Coronal Neck Std

2mm Sagittal Neck Std

180mm FOV